

ART. ECO SUPERIOR



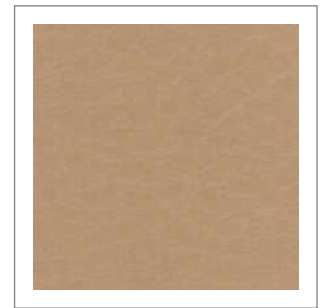
01 BIANCO



02 BEIGE



10 LIGHT BEIGE



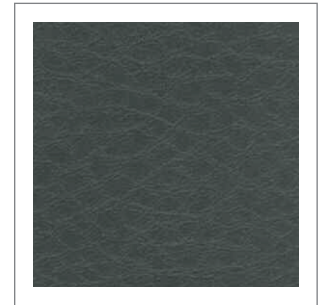
11 CAMEL



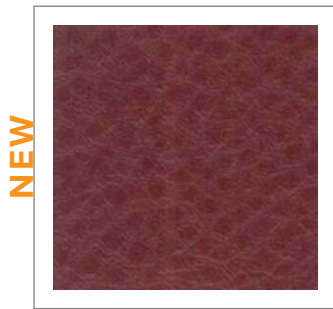
12 TORTORA



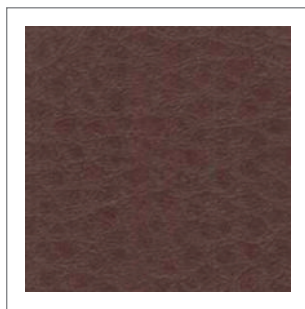
14 GREY



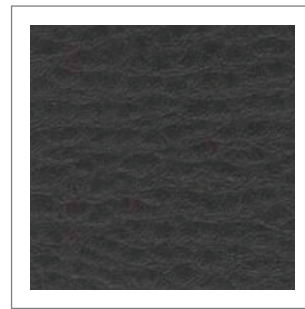
04 DARK GREY



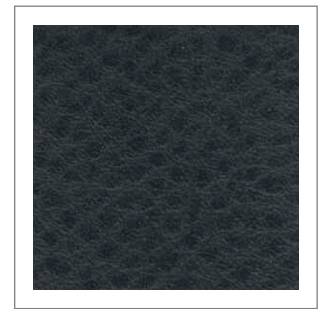
18 RED



09 BORDEAUX



06 DARK BROWN

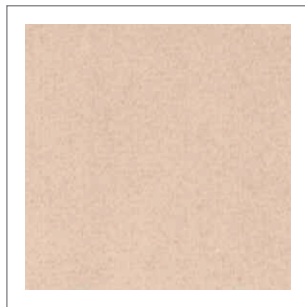


03 NERO

ART. VELLUTO



01 BIANCO



03 PANNA



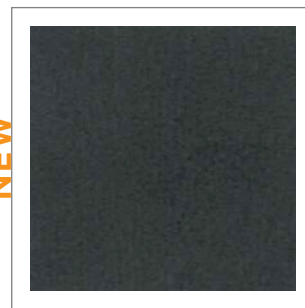
05 CORDA



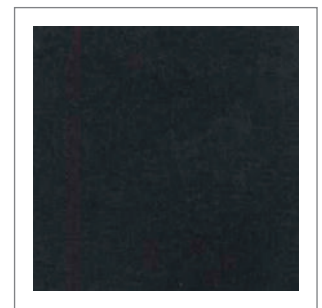
11 MARRONE



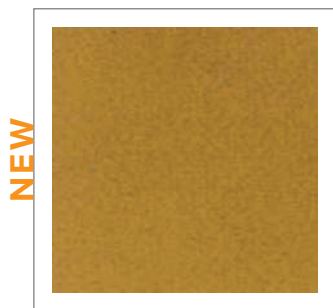
32 GRIGIO



19 GRAPHITE



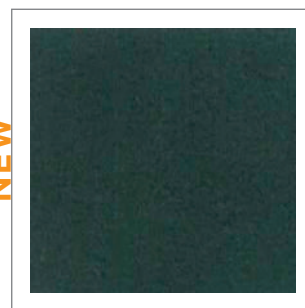
35 NERO



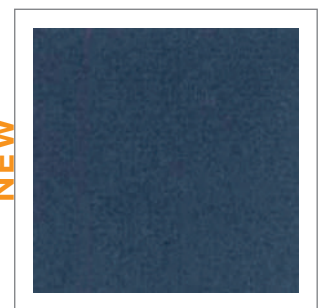
08 GIALLO



22 ROSSO



12 VERDE



29 BLU

ECO SUPERIOR

SCHEDA TECNICA / DATA SHEET

Caratteristiche Characteristics	Testo Metodo Test Method	Unità Unit	Valore Value
Composizione materiale Material composition	ISO 1833 o ISO 5088	%	15% PU - 85% PES
Peso totale Total weight	ISO 3801 - EN29073/1	$\frac{g}{m^2}$	400 ± 5%
Larghezza Usable width	ISO 3932	cm	140 ± 3%
Resistenza alla abrasione Abrasion resistance	UNI EN ISO - 12947/1-2 MARTINDALE 5402:2004	Cicli Cycles	>50.000
Resistenza alla luce Light resistance	UNI EN - ISO - 105 - B02/04	Scala dei blue Bluescale	5



TRASPIRANTE BREATHABLE



Evitare la luce diretta del sole: Evitare l'esposizione alle fonti di calore.
Avoid direct sunlight. Avoid exposure to heat sources.







Applicazioni: Idoneo per tutte le tecniche di imbottitura e rivestimento






Applications: Recommendable for the use in the upholstery industry

Pulizia e manutenzione: Non usare detergenti abrasivi o solventi aggressivi. Pulire con acqua tiepida tramite panno. Non utilizzare colle contenenti solventi. Si esclude ogni responsabilità per usi errati.

Cleaning and application: Please do not use detergents abrasives or aggressive solvents. Clean with warm water with a soft brush. Do not use glue that contains solvent. We are not liable for wrong use.

VELLUTO

Composizione tessuto	: 100% PL
Altezza	: 140 CM
Peso	: 300 ± 5% gr/mq
Martindale (UNI EN ISO 12947-2:1998)	: 100.000 GIRI
Solidità del colore allo sfregamento (UNI EN ISO 105 X12)	: a secco 4/5
	: a umido 4/5
Solidità del colore alla luce (UNI EN ISO 105-B02)	: 5
Solidità del colore al lavaggio (UNI EN ISO 105-C06:2010)	: 4/5
Indicazioni di lavaggio	    

La superficie di questo articolo può subire un trasferimento di colore a causa di alcuni coloranti utilizzati per abbigliamento e accessori (ad esempio jeans). Questo fenomeno viene amplificato con alti tassi di umidità o alte temperature. Possibilità di migrazione del colore. I dati riportati nella scheda tecnica sono indicativi e in buona fede, ci riserviamo di modificarli in qualsiasi momento al fine di migliorare i nostri prodotti. L'impiego del prodotto va valutato in base all'utilizzo finale, non saremo responsabili per usi impropri. Il colore può subire delle leggere variazioni in base alle diverse partite.

IL COLORE PUÒ SUBIRE VARIAZIONI IN BASE ALLE DIVERSE PARTITE.